

Mathes 0

- Screening zur Erfassung der Mathematikleistungen zum Schulbeginn -



Name: _____



Dieses Werk ist lizenziert unter einer [Creative Commons Namensnennung - Nicht-kommerziell - Weitergabe unter gleichen Bedingungen 4.0 International Lizenz](#).

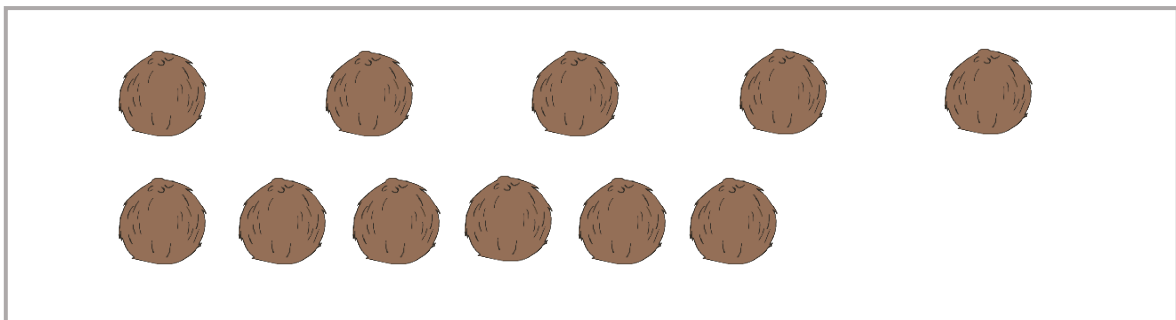
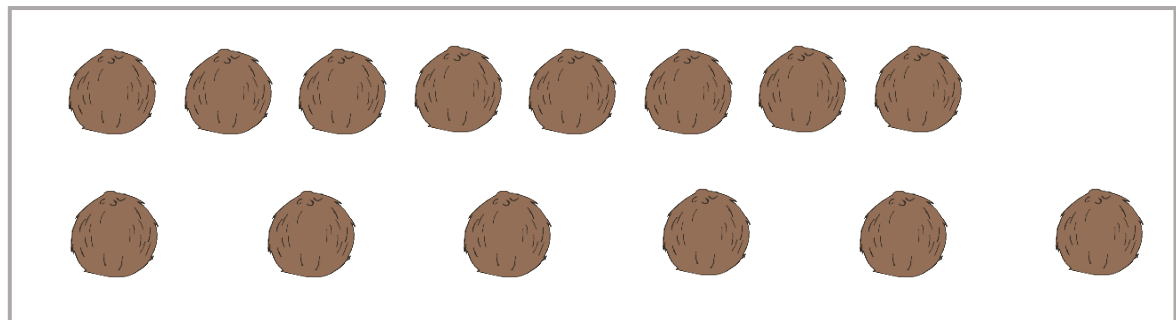
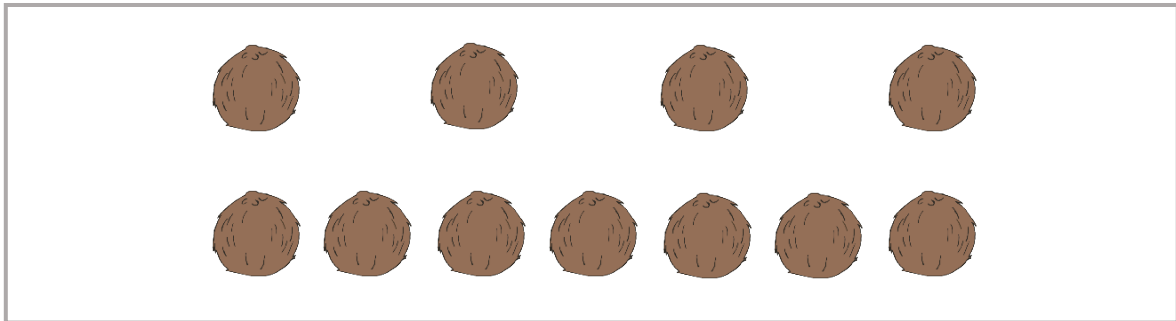
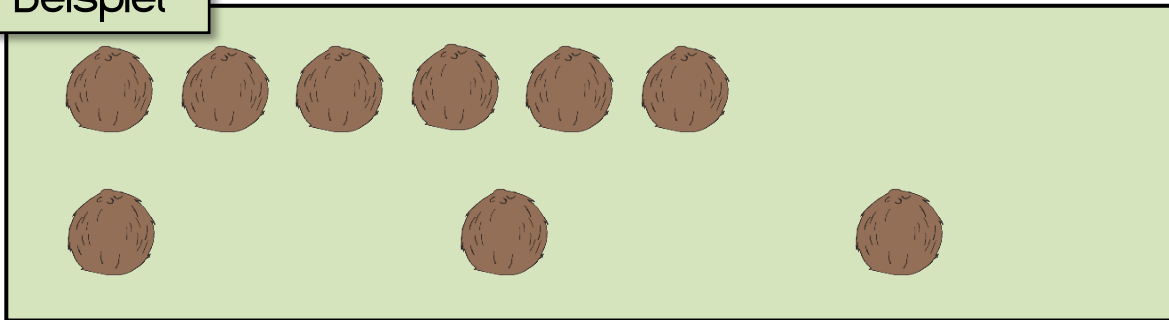


www.lernlinie.de/to/mathes0



1. Was ist mehr? Oben oder unten? Kreise ein.

Beispiel

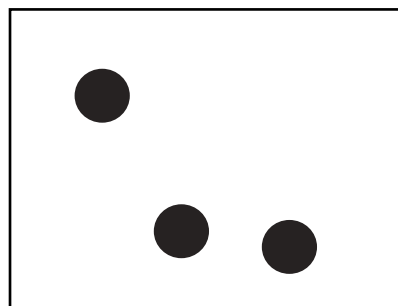
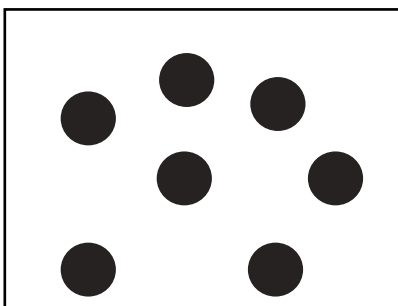
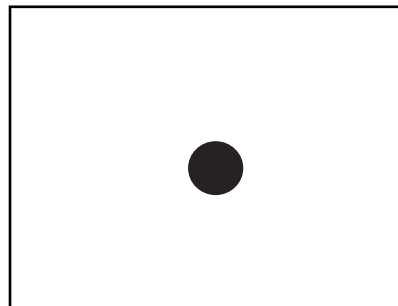
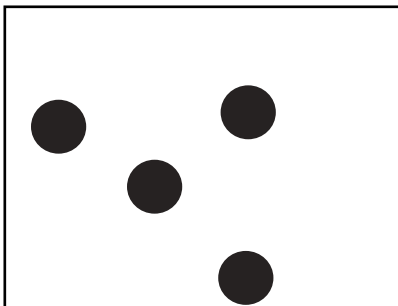
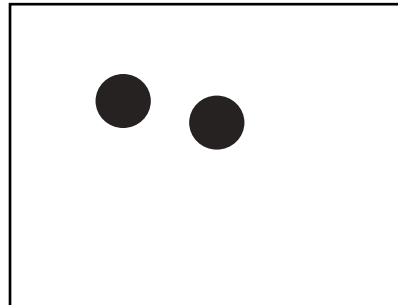
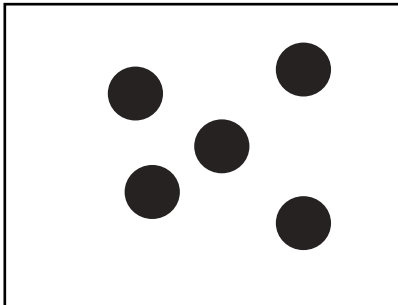




2. Zeichne rechts genauso viele Punkte wie links.

Beispiel

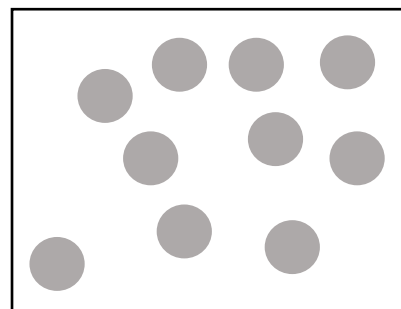
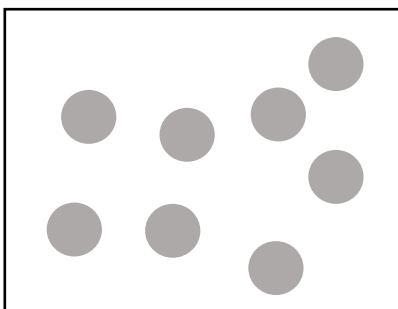
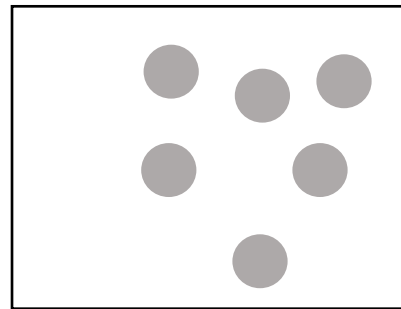
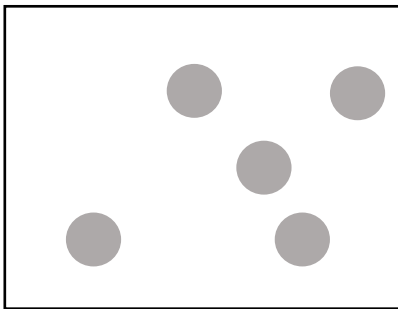
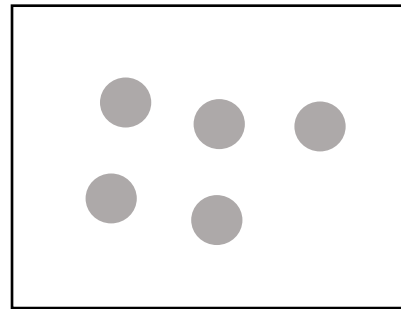
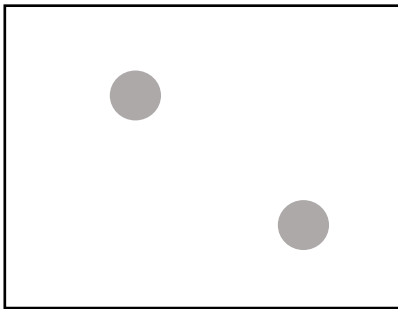
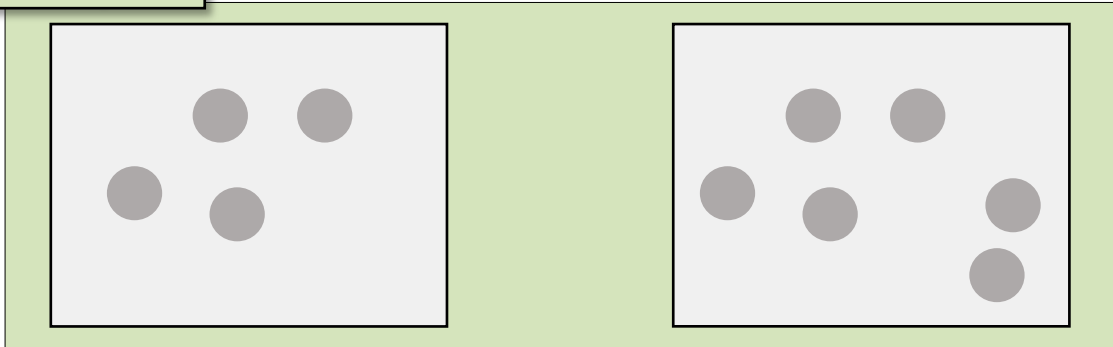
| | |
|--|--|
| | |
|--|--|

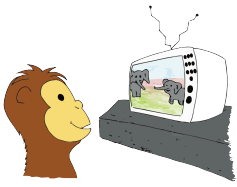




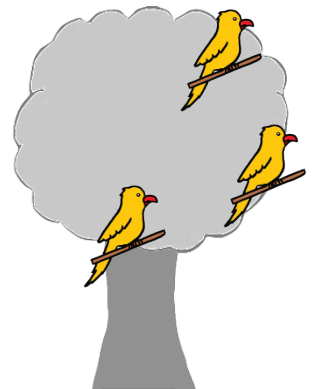
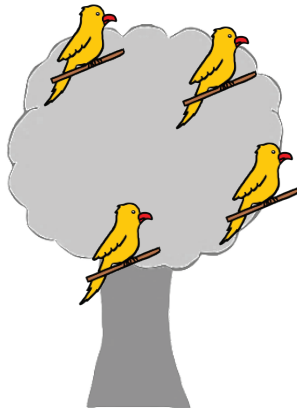
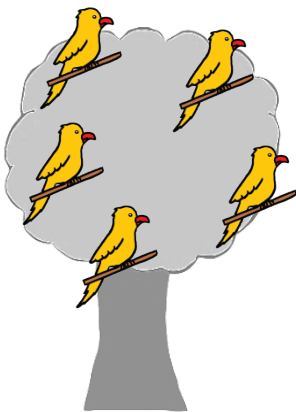
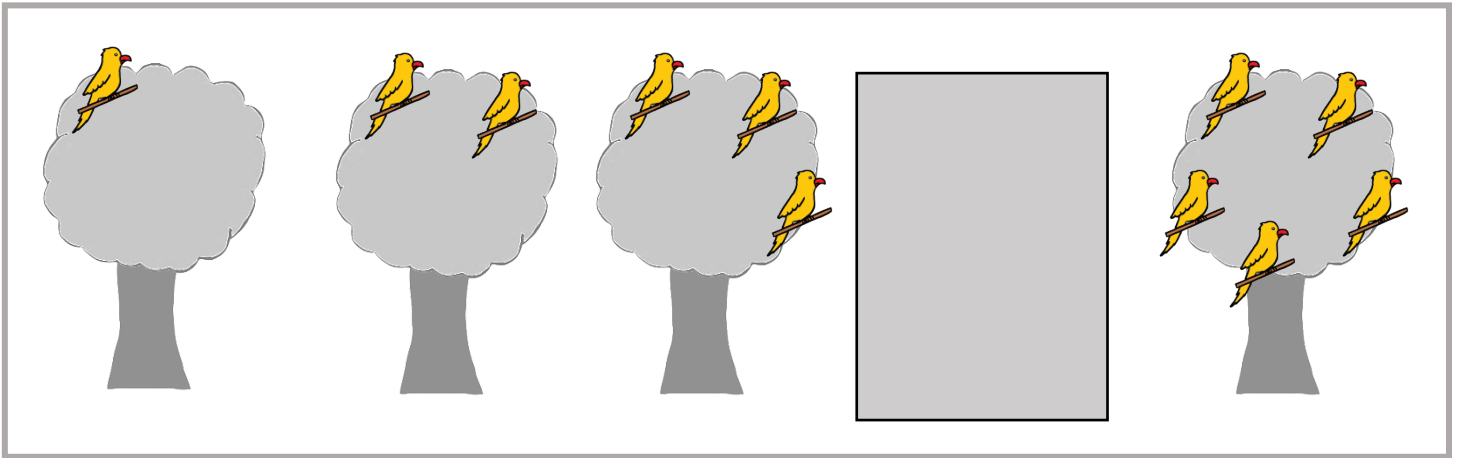
3. Auf beiden Seiten sollen gleich viele Punkte sein.
Streiche weg.

Beispiel



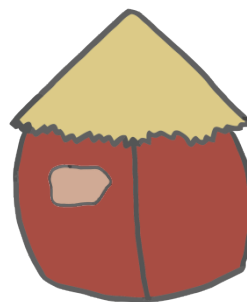
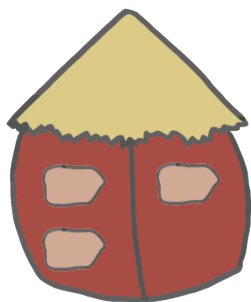
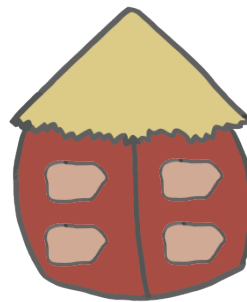
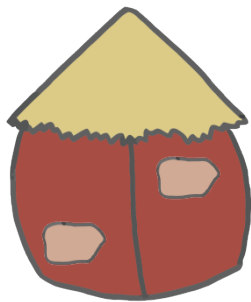
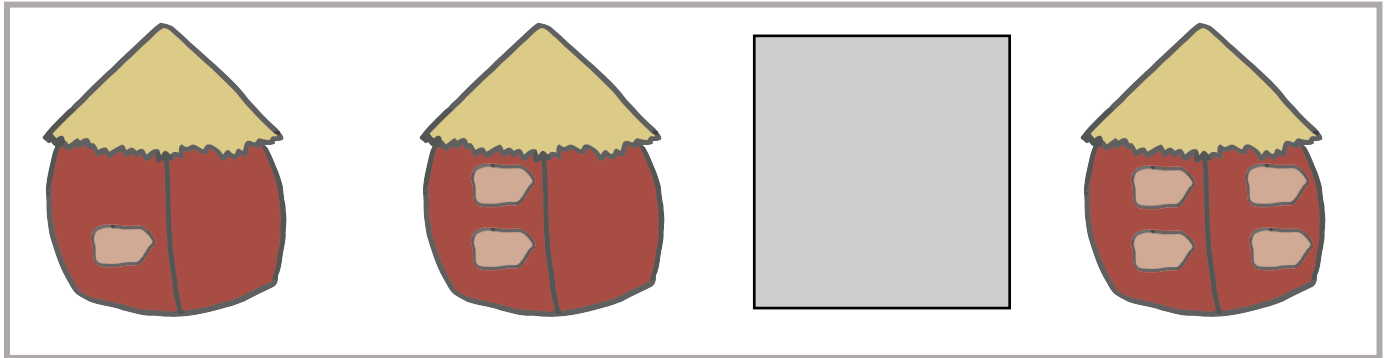


4. Welcher Baum passt in die Reihe? Kreuze an.











5. Welches Haus passt in die Reihe? Kreuze an.



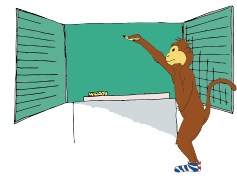


6. Stimmt das?

Beispiel

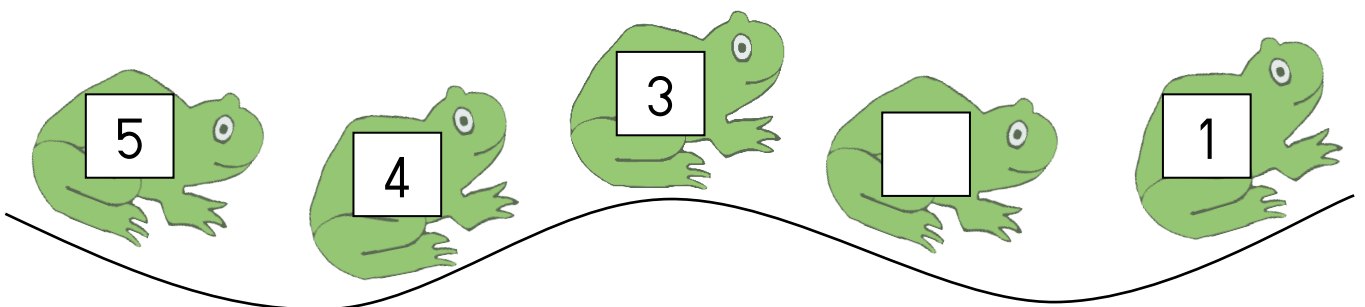
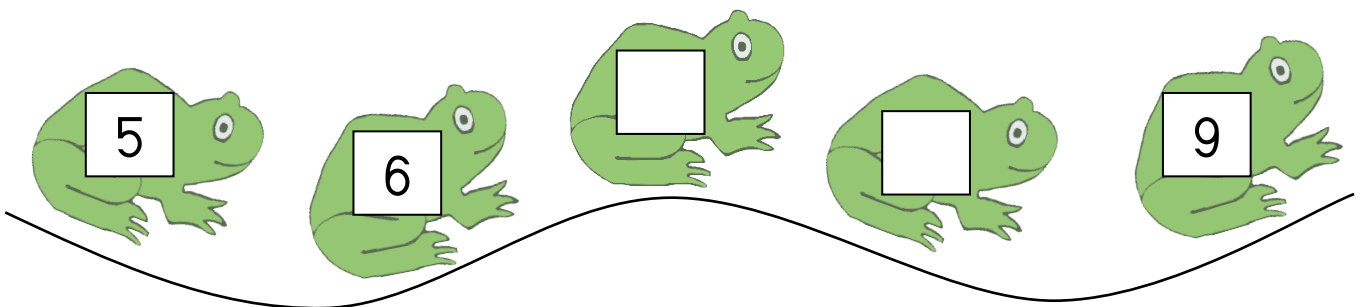
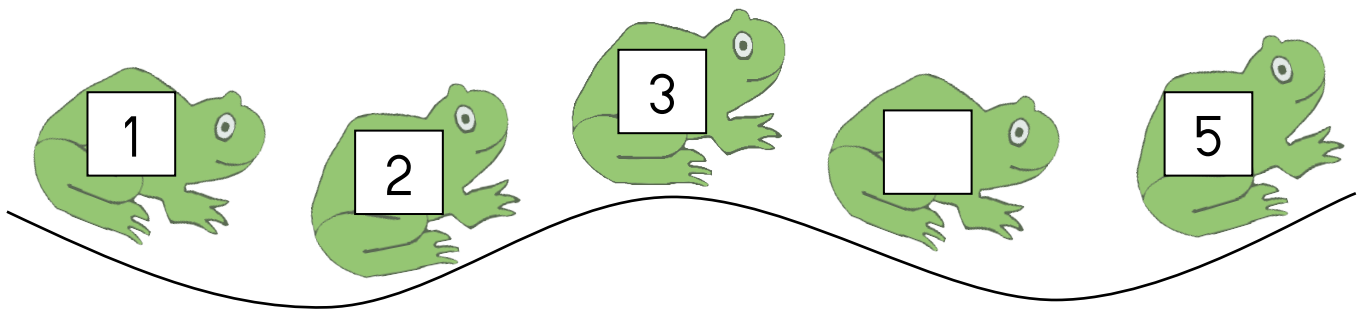
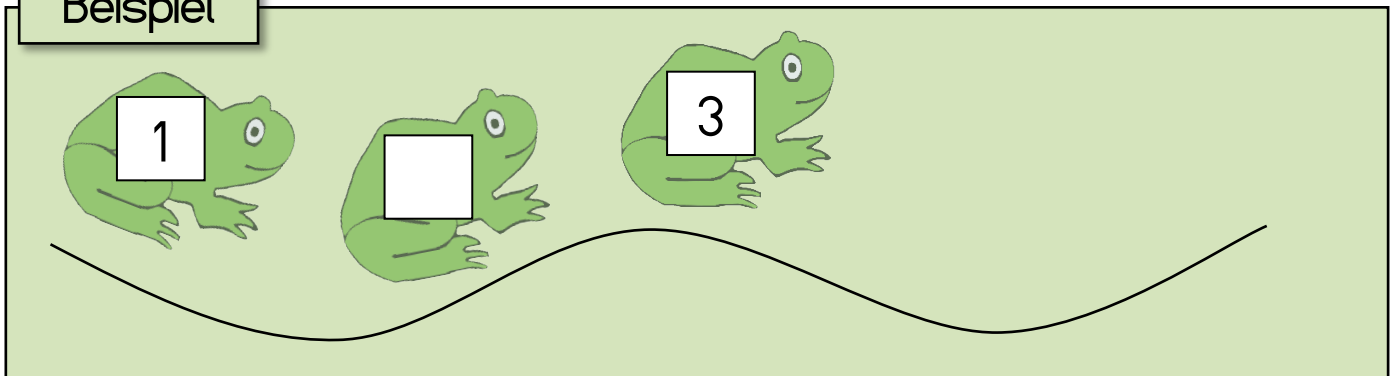
| | | |
|---|---|--|
|  |  |  |
|  |  |  |





7. Was fehlt?

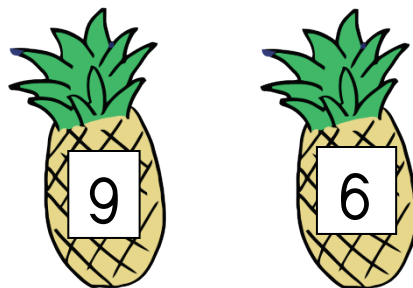
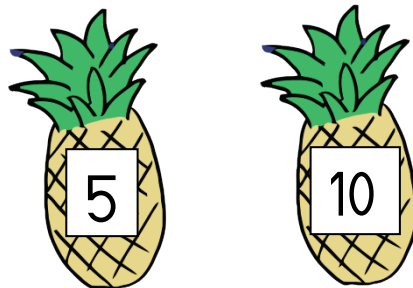
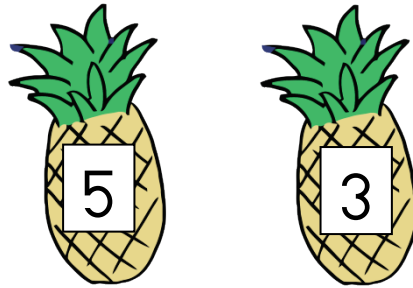
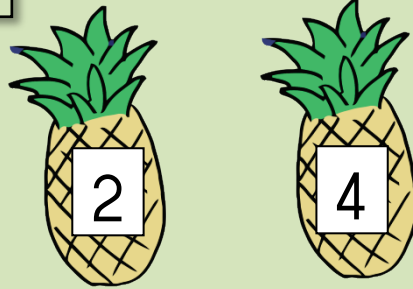
Beispiel





8. Welche Zahl ist größer? Kreuze sie an.

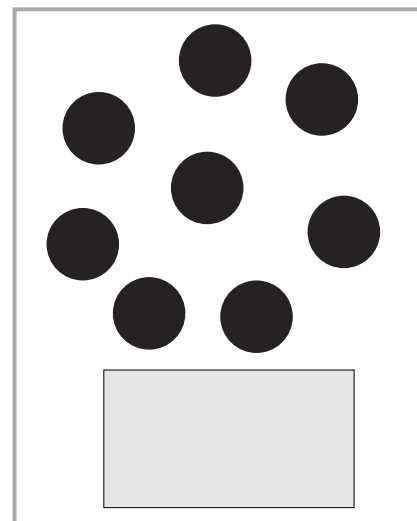
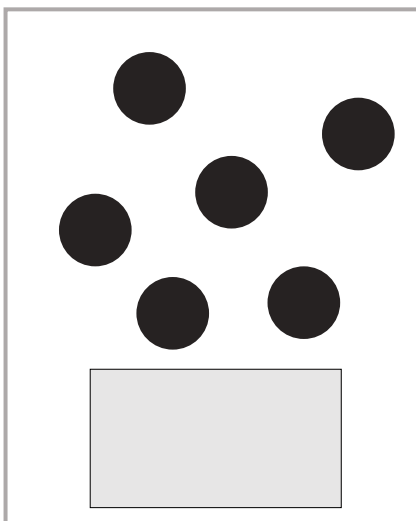
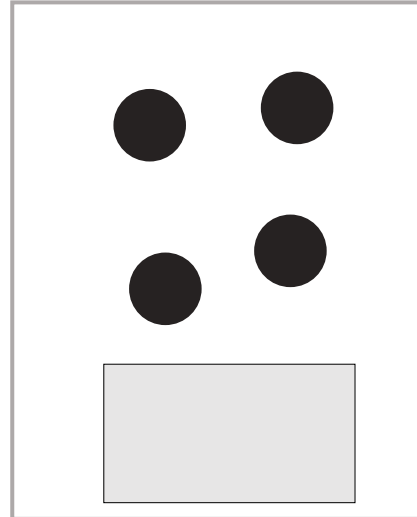
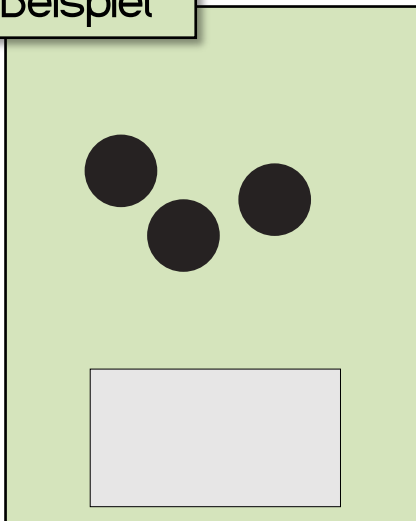
Beispiel





9. Wie viele sind es? Schreibe auf.

Beispiel





10. Nun anders herum: Zeichne die Punkte dazu.

Beispiel

A large light green square with a smaller white square inside it. Below the white square is a grey box containing the number 4.

A large white square with a smaller white square inside it. Below the inner square is a grey box containing the number 3.

A large white square with a smaller white square inside it. Below the inner square is a grey box containing the number 7.

A large white square with a smaller white square inside it. Below the inner square is a grey box containing the number 9.





11. Löse die Rechenrätsel.



An einer Palme hängen 4 Kokosnüsse. An einer anderen Palme hängen 3. Wie viele Kokosnüsse hängen insgesamt an den Palmen?



Es hängen Kokosnüsse an den Palmen.



Ein Affe hat 6 Bananen. Wie viele Bananen hat er noch, wenn er 4 Bananen isst?



Er hat dann noch Bananen.



Leo hat 3 Blätter gesammelt. Pia hat 2 Blätter mehr gesammelt.

Wie viele Blätter hat Pia?

Pia hat Blätter.



Das Zebra hat 8 Streifen am Bein. Der Tiger hat 5 Streifen weniger.

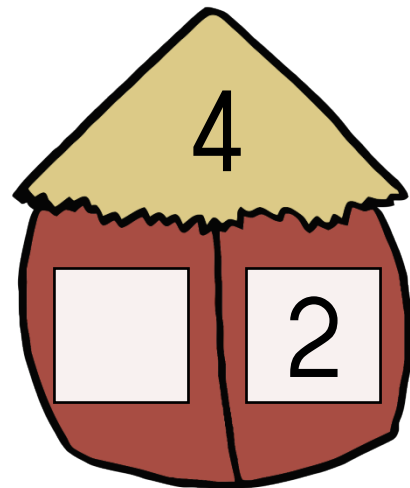
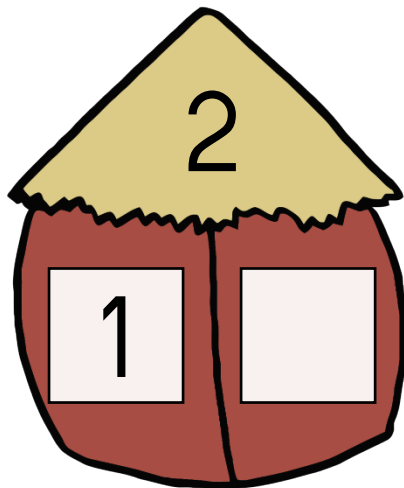
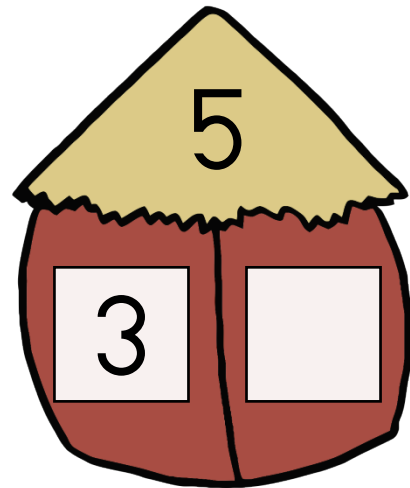
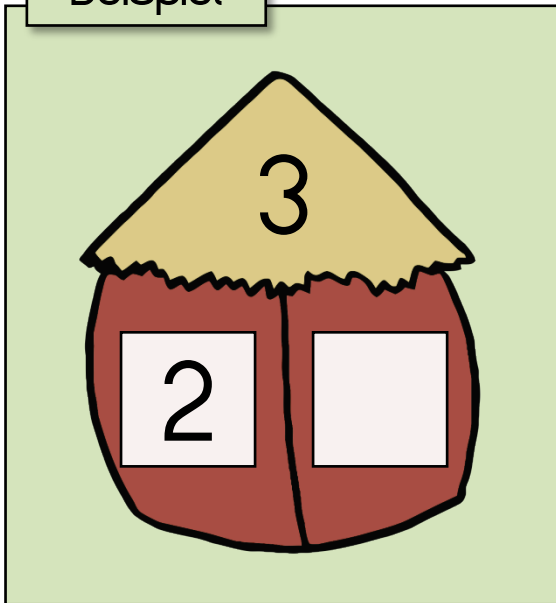
Wie viele Streifen hat der Tiger?

Der Tiger hat Streifen.



12. Dies sind Zahlenhäuser. Unten muss zusammen genauso viel sein wie im Dach. Trage die fehlende Zahl ein.

Beispiel





Auswertungstabelle

| | | Aufgabe | Beschreibung | Punkte | von | |
|-------------|---|---------------|-----------------------------|--------|--------|----|
| Niveaustufe | 1 | 1 | Eins-zu-Eins-Zuordnung | | 3 | |
| | | 2 | Mengenvergleich I | | 3 | |
| | | 3 | Mengenvergleich II | | 3 | |
| | | 4 | Reihenbildung I | | 1 | |
| | | 5 | Reihenbildung II | | 1 | |
| | | <i>Gesamt</i> | ----- | | 11 | |
| | 2 | 6 | Zahlenkenntnis | | 3 | |
| | | 7.1 | Vorwärtszählen | | 1 | |
| | | 8 | Zahlvergleich | | 3 3 | |
| | | 11.1 & 11.2 | Addition & Subtraktion | | 2 | |
| | | <i>Gesamt</i> | ----- | | 9 | |
| | 3 | 7.2 & 7.3 | Weiter- und Rückwärtszählen | | 2 | |
| | | 9 | Menge-Zahl-Zuordnung | | 3 | |
| | | 10 | Zahl-Menge-Zuordnung | | 3 | |
| | | <i>Gesamt</i> | ----- | | 8 | |
| | 4 | 11.3 & 11.4 | Vergleichsaufgaben | | 2 | |
| | 5 | 12 | Zahlenhäuser | | 3 | |
| | | | <i>Gesamt</i> | ----- | | 33 |